

ROTARY PISTON

Vacuum Pump

For Hydrogen Seal Oil Purifiers



US VACUUM PUMPS LLC Model RP-50B-WS Rotary Piston vacuum pump is a heavy duty INDUSTRIAL GRADE unit capable of producing an ultimate vacuum of 50 microns abs (29.9"+ Hg).

The system has been EXCLUSIVELY DESIGNED for use in the power generating industry to distill off condensed water vapor out of generator turbine oil. The motor and solenoid valve are explosion-proof rated and an inline gear reducer is used to address safety concerns for the presence of hydrogen in the process gas stream.

Low pump rpm (350 rpm) and generous oil supply insures minimal wear to the pump from water diluted oil resulting in an exceptionally durable vacuum pumping system. One can easily expect 20+ years of use from this pumping system with only a minimal of routine maintenance required.

FEATURES

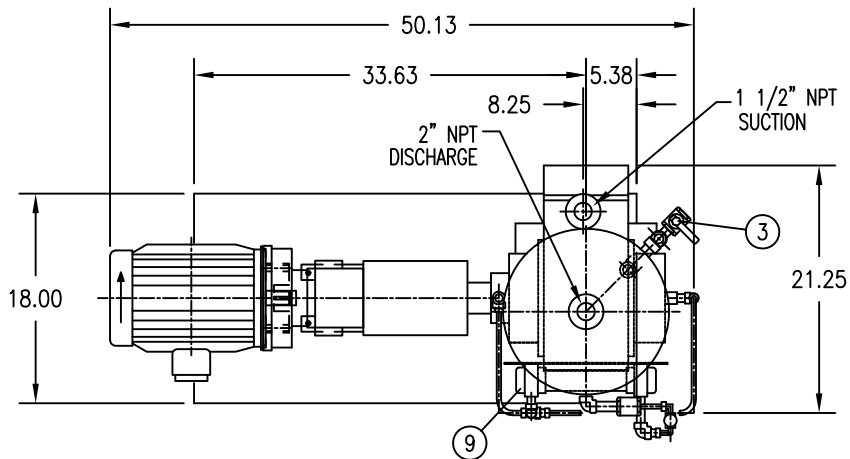
- Air or Water cooling
- 304SST oil tank
- Long lasting & durable
- Full pumping speed down to 1 Torr
- Absolute pressures to 0.050 Torr
- Designed for heavy vapor loads



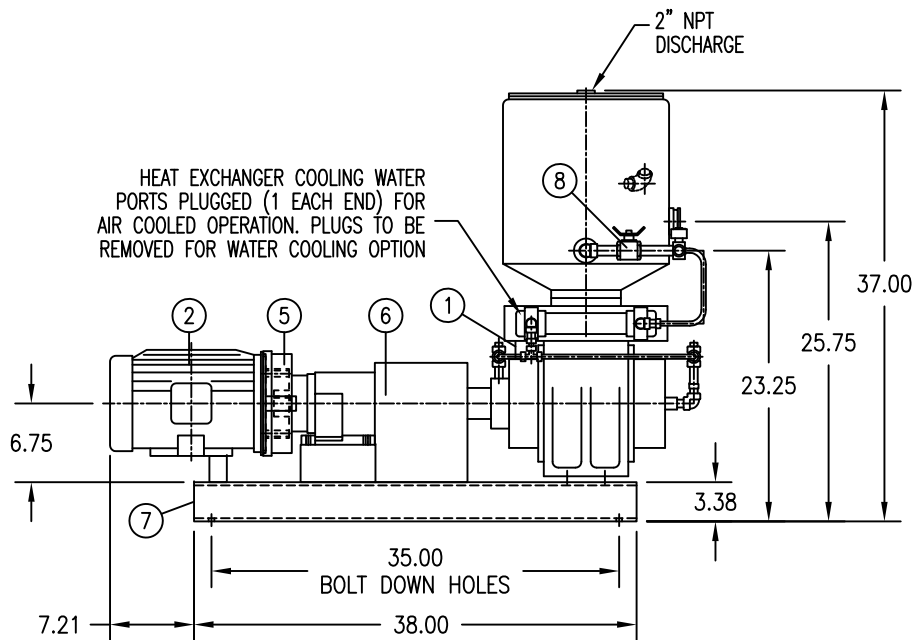
GE Power Approved & Recommended

SPECIFICATIONS

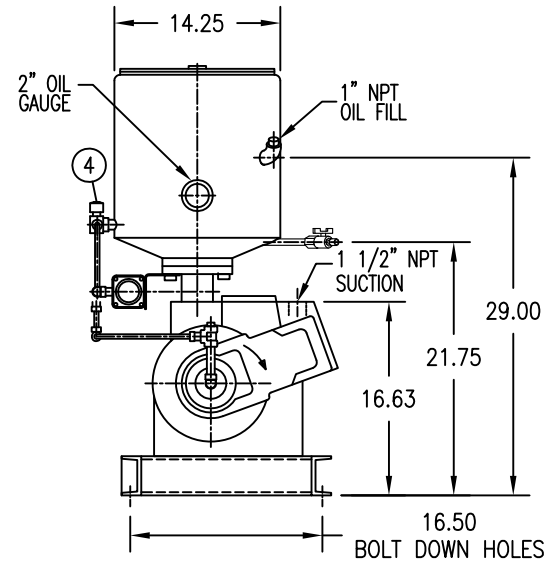
Pump Model	RP50B-WS	
Displacement	CFM	47
Ultimate Vacuum	Torr	0.050 (29.9"+Hg)
Motor	Hp	3
Pump Speed	RPM	350
Oil Capacity	Qt	15
Inlet connection	in.	1.5" NPT
Exhaust connection	in.	2" NPT
Pump Weight	Lbs.	750



PLAN



ELEVATION



END VIEW

NO.	QTY	DESCRIPTION
1	1	VACUUM PUMP MODEL RP50B-WS
2	1	ELECTRIC MOTOR, BALDOR CEM7042T, Div2 Grp B,C,D
3	1	OIL DRAIN VALVE, BRASS 3/4"
4	1	SOLENOID VALVE, 208v, 60hz, Exp
5	1	GEARBOX, DODGE HB382
6	1	COUPLING, DODGE E5 & GUARD
7	1	SKID FRAME
8	1	1/4" BALL VALVE, BRASS
9	1	HEAT EXCHANGER, 1P, BRASS/COPPER

NOTES:

1. ALL STANDARD UNIT PIPING SHALL BE SCH/40 ASTM A-53 TYPE F C/W 150# ASTM A-197 MALLEABLE IRON THREADED FITTINGS.
2. DIMENSION TOLERANCE TO 1/4".
3. CUSTOMER IS RESPONSIBLE FOR PROPER LIFTING EQUIPMENT FOR LIFTING SKID.
4. ANCHOR BOLTS ARE NOT FURNISHED WITH UNIT.
5. MOTOR: 3Hp, 1755RPM, 208v 60hz, 3-PH.
6. PUMP: 47cmf DISPLACEMENT, MAX VAC 0.050mmHg (Abs).
7. WEIGHTS: OPERATING = 745lbs, SHIPPING = 873lbs.

DIMENSIONS ARE IN INCHES [mm]
WEIGHT IN LBS [kg]
THIRD ANGLE PROJECTION

2	GENERAL REVISION	JCM	PD	PD	6-JUN-17
1	GENERAL REVISION	JCM	PD	PD	10-MAY-17
0	GENERAL REVISION	JCM	PD	PD	24-APR-17
REV	DESCRIPTION	DWN	CK	APP	DATE
DWN	JCM 24-APR-17	THIS DRAWING AND ALL INFORMATION SHOWN HEREIN ARE THE EXCLUSIVE PROPERTY OF US VACUUM PUMPS, AND ARE SUBMITTED ON A CONFIDENTIAL BASIS ONLY. THE RECIPIENT AGREES NOT TO REPRODUCE THE DISCLOSURE OF THE DRAWING AND THAT NO SHOWN HEREIN WILL BE MADE TO THE THIRD PARTY WITHOUT PRIOR WRITTEN CONSENT OF US VACUUM.			
CK	PD 24-APR-17	CERTIFIED DRAWING US VACUUM PUMPS, LLC P.O. BOX 909 CANTON, TEXAS 75103 PH: 888-416-7466 / FAX: 877-416-7599			
APP	PD 24-APR-17				
SCALE	NTS				
RP-50B WS VACUUM PUMP SYSTEM SKID MOUNTED					
DWG. NO. US-GA-RP50B-FRM-10					REV 2