

Vane Pumps- Two- Stage

U.S. VACUUM

7 - 64 CFM

Vacuum to: 0.001 mmHg

USV Series Rotary Vane Vacuum Pumps



USV pumps are Two-Stage Rotary Vane Air-Cooled vacuum pumps capable of producing an ultimate vacuum of .0005 mm Hg. All pumps come with an anti suck-back valve, gas ballast valve, ISO/KF connections, base & rubber feet. Single phase pumps come with 2 meter 120V power cord & on-off switch.



USV pumps are ideally suited for use in applications such as Air Conditioning & refrigeration evacuation, vacuum ovens, backing turbomolecular pumps, degassing, cylinder filling, sampling applications and others.

Models US-200/400 come standard with 1/60/115-230V
Models US-650/1000/1800 come standard with 3/60/230-460 motor.

Other motor voltages available on request.

Technical Data

MODEL		200	400	650	1005	1805
Displacement	CFM	7	14	22	35	64
Ultimate Vacuum	Torr	.001 mm Hg				
Noise Level	dba	56	56	57	56	56
Motor	Hp	1/2	1	1	2	5
Pump Speed	RPM	1800				
Oil Capacity	Qt.	0.62	1.5	2.9	4.7	6.5
Inlet, ISO-KF	mm	KF25			KF40	
Pump Weight	Lbs.	53	70	114	174	235

Vacuum Pump Oil

Tested to high vacuum levels, this oil meets rigid requirements for vapor pressure, stability & viscosity

Size	Cat. No
Quart	US-350SS-32
Gallon	US-350SS-128
5 Gallon	US-350SS-5
55 Gallon	US-350SS-55



Exhaust Filter

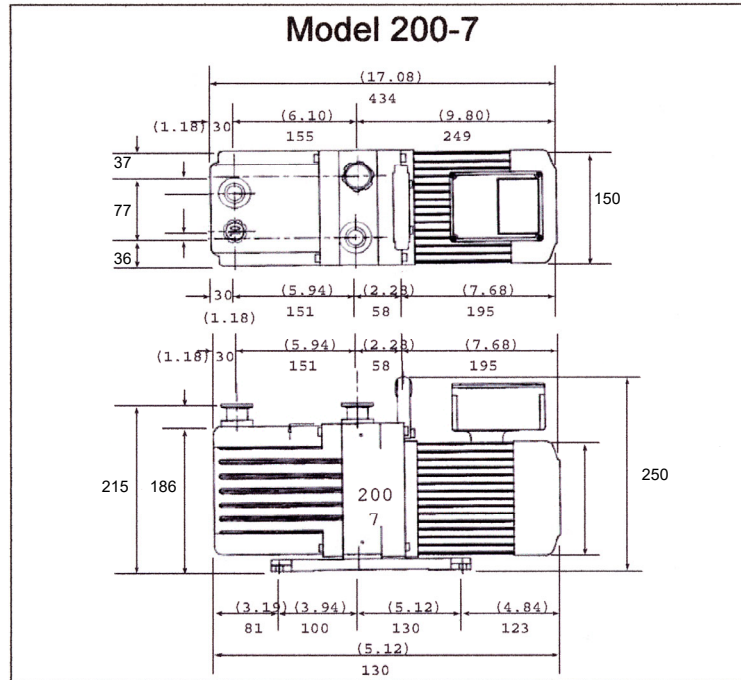
Use when pumping continuously above 1 Torr. Captures oil mist from pump for clean oil-free discharge

Pump Model	Cat. No
US-200	EE-GL915NW25
US-400	EE-GL925NW25
US-600	VFSG848NW40
US-1000	VFSG848NW40
US-1800	VFSG850NW40



888-416-7366

DIMENSIONS (mm)



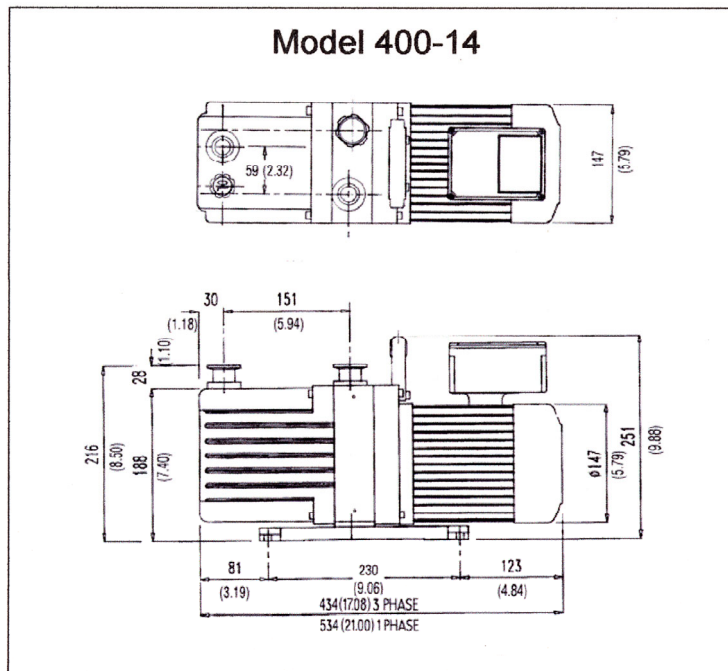
Dimensions subject to change without notice

US VACUUM PUMPS LLC

P.O. BOX 909 - CANTON, TX 75103 - (888) 416-7366 Fax (877) 416-7599

WWW.USVACUUMPUMPS.COM

DIMENSIONS (mm)



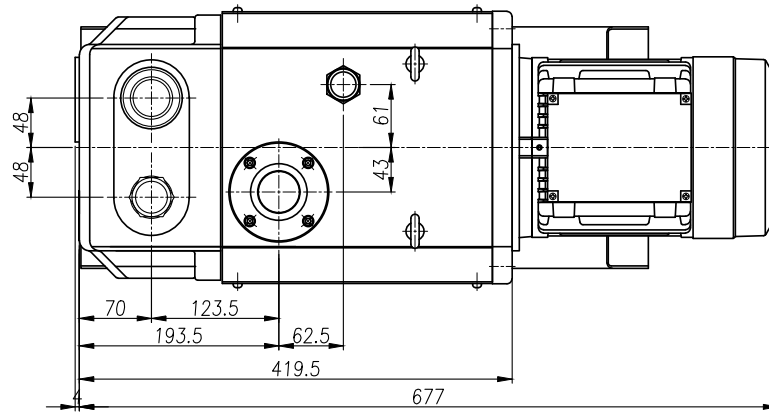
Dimensions subject to change without notice

US VACUUM PUMPS LLC

P.O. BOX 909 - CANTON, TX 75103 - (888) 416-7366 Fax (877) 416-7599

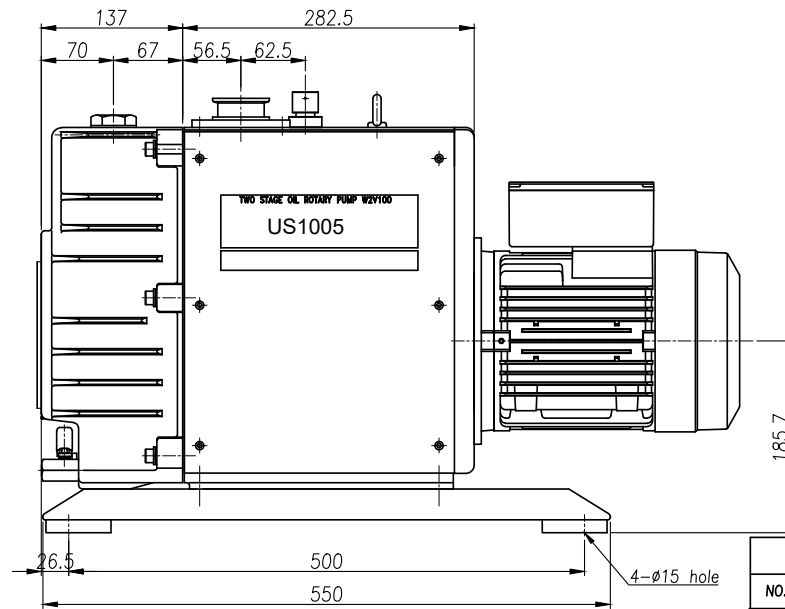
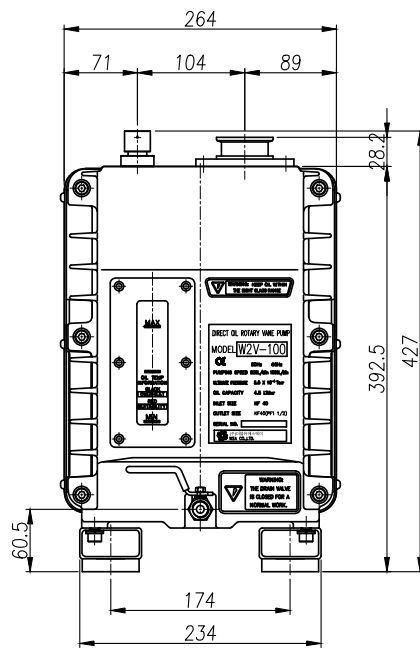
WWW.USVACUUMPUMPS.COM

REVISION	DATE	DESCRIPTION
△		

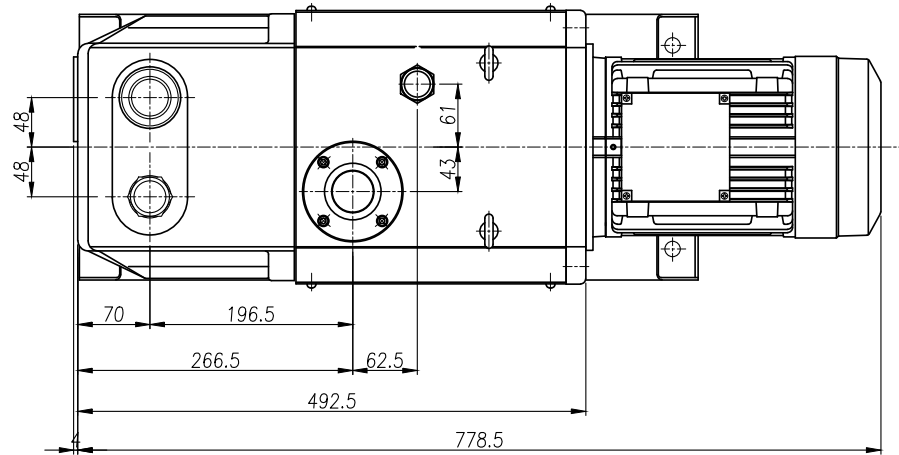


2-Stage Rotary Vane Vacuum Pump

Model: US1005
 Displacement: 35 cfm
 Ultimate Vacuum: 0.002mmHg (Pirani)



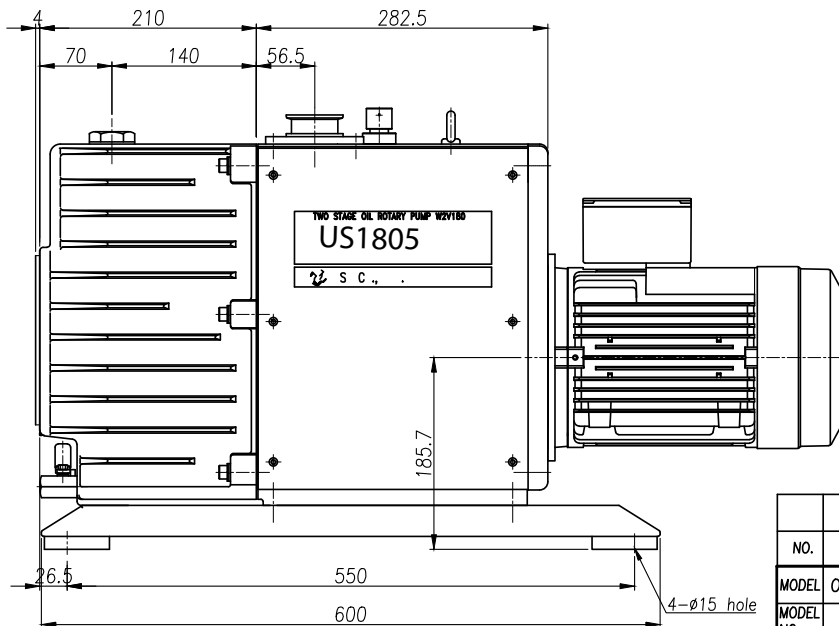
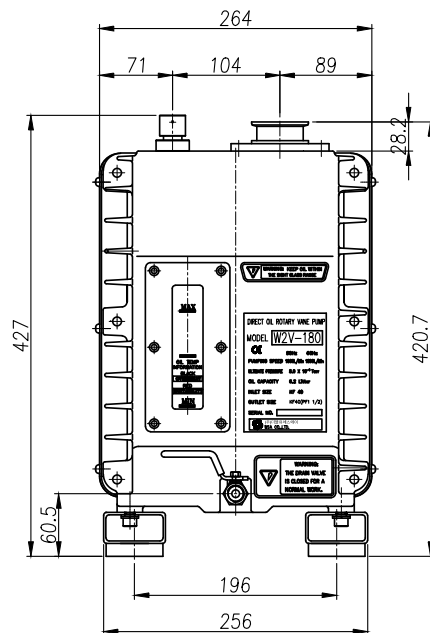
DIMENSIONS					
NO.	PART NAME	MATERIAL	QTY	REMARK	
MODEL	OIL ROTARY VACUUM PUMP	DRAWN	DESIGNED	CHECKED	APPROVED
MODEL NO.	US1005				
DWG NO.		CUSTOMER	STANDARD		
US VACUUM			DATE	SCALE(A4)	
			JUL. 14 2014	1/7	



REVISION	DATE	DESCRIPTION
△		

2-Stage Rotary Vane Vacuum Pump

Model: US1805
 Displacement: 63.4 cfm
 Ultimate Vacuum: 0.002mmHg (Pirani)



* 3 PHASE MOTOR

DIMENSIONS					
NO.	PART NAME	MATERIAL	QTY	REMARK	
MODEL	OIL ROTARY VACUUM PUMP	DRAWN	DESIGNED	CHECKED	APPROVED
MODEL NO.	US1805				
DWG NO.		CUSTOMER	STANDARD		
US VACUUM			DATE	SCALE(A4)	
			JUL. 14 2014	1/7	