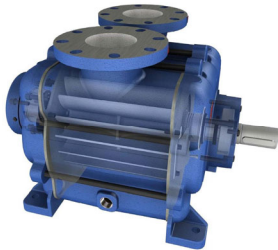




# US VACUUM PUMPS LLC

## LVTX-1000/1200

### BARE SHAFT CONSTRUCTION W/ MECHANICAL SEAL



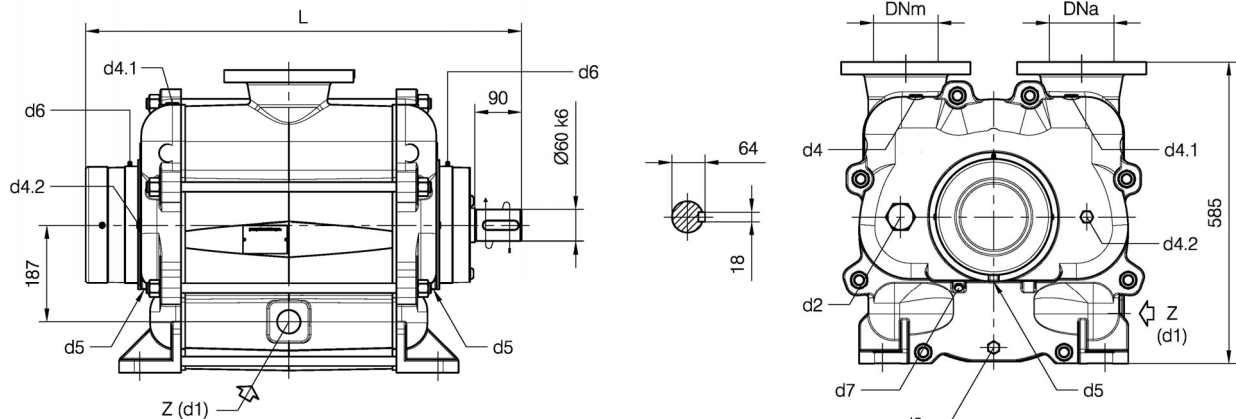
U.S. VACUUM LVT pumps are single stage liquid ring vacuum pumps capable of producing a vacuum to 29" Hg . The pumps are available in various materials of construction ( FS1 = Iron/316SST, FS2 = Iron/304SST, SS = All stainless steel ).

Pumps are provided with threaded connections for service liquid, pump draining, vacuum relief valve and companion flanges. Optional items include inlet check valve, vacuum relief valve, flow control, solenoid valve, vacuum and temperature gauges.

Pumps can also come as completely packaged units using water or water as a seal fluid.

### TECHNICAL DATA

PUMP TYPE		LVTX 1000	LVTX 1200
Pumping Capacity (@26" Hg)	CFM	900	1175
Speed	RPM	985	1180
Motor-Installed power	HP	75	100
Average service liquid flow	GPM	22	22
Noise level at 100 Torr	db(A)	79	82
Minimum suction pressure	Torr	25	25



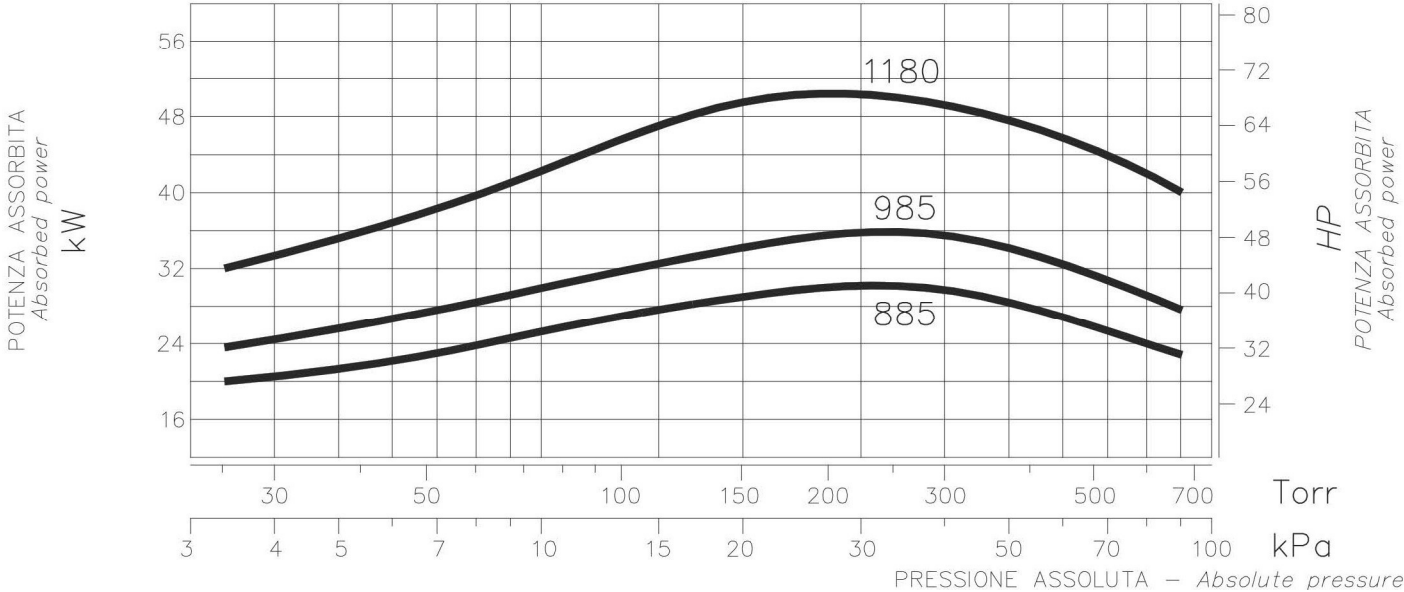
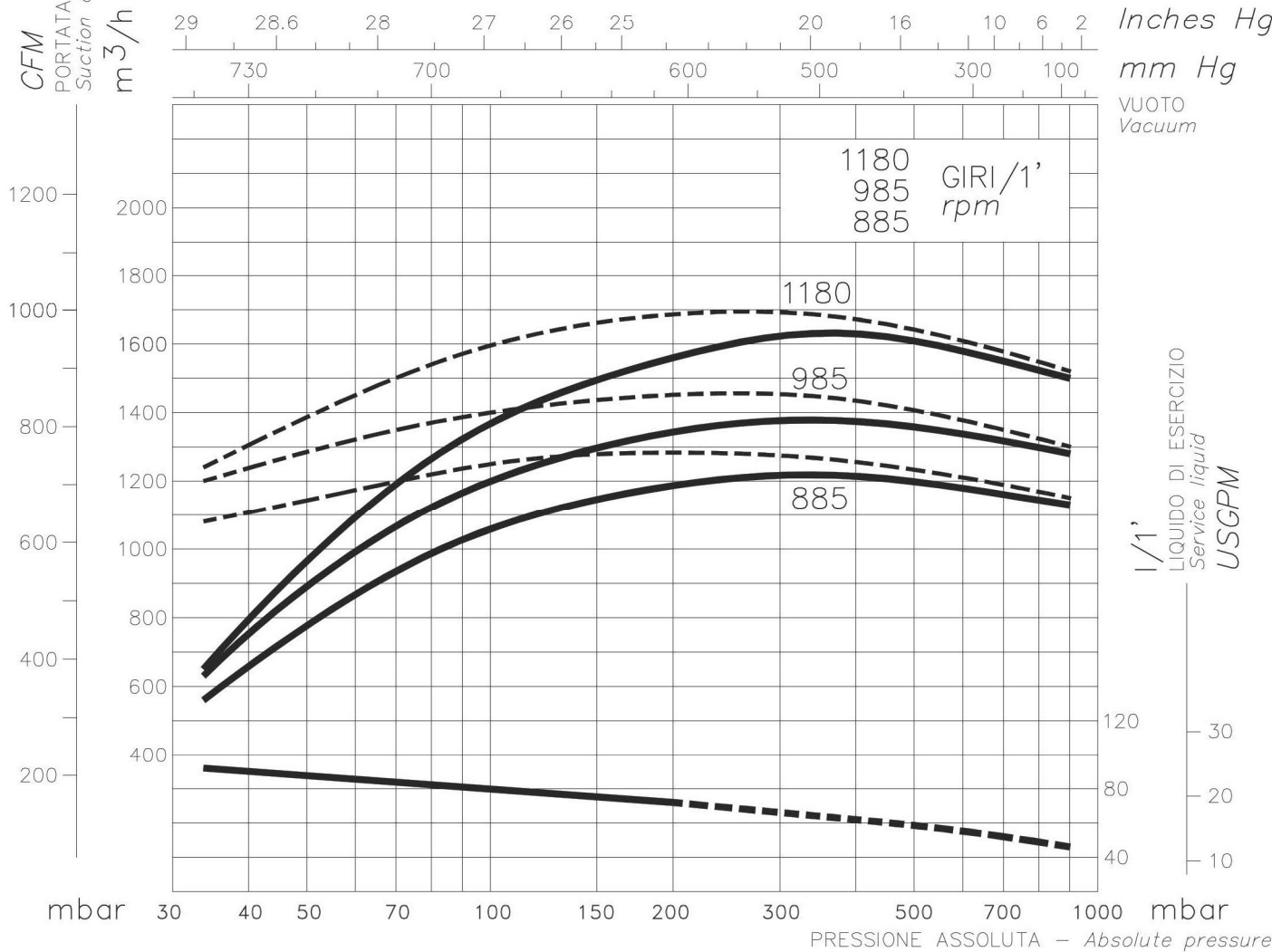
d1, d2= 1-1/2" d3, d4, d4.1, d4.2 = 1/2"; d5= 1/8" d7 = 1/4"  
L(mm)= LVTX100 (773); LVTX1200 (843)

DNa/DNm = 150# ANSI 5" WEIGHT: LVTX (910lbs); LVTX1200 (975 lbs)

NOTE: Dimensions in mm  
(1" = 25.4 mm)



# LVTX-1000

I DATI RIPORTATI SONO RIFERITI A – Data refers to :  
ARIA SECCA A 20 °C — Dry air at 20 °C (68 °F)  
ARIA SATURA A 20 °C — Saturated air at 20 °C (68 °F)  
LIQUIDO DI ESERCIZIO — ACQUA — Water Service liquid  
TEMPERATURA LIQUIDO DI ESERCIZIO 15 °C — (59 °F) Service liquid temperature  
PRESSIONE DI SCARICO 1013 mbar Discharge pressure  
TOLLERANZE 10% Tolerance



# LVTX-1200

I DATI RIPORTATI SONO RIFERITI A - *Data refers to :*

ARIA SECCA A 20 °C		Dry air at 20 °C (68 °F)
ARIA SATURA A 20 °C		Saturated air at 20 °C (68 °F)
LIQUIDO DI ESERCIZIO	ACQUA - Water	Service liquid
A LIQUIDO DI ESERCIZIO	15 °C - (59 °F)	Service liquid temperature
PRESSIONE DI SCARICO	1013 mbar	Discharge pressure
TOLLERANZE	10%	Tolerance

