

ROTARY PISTON

Vacuum Pump

RP-150S™ & RP-300S™



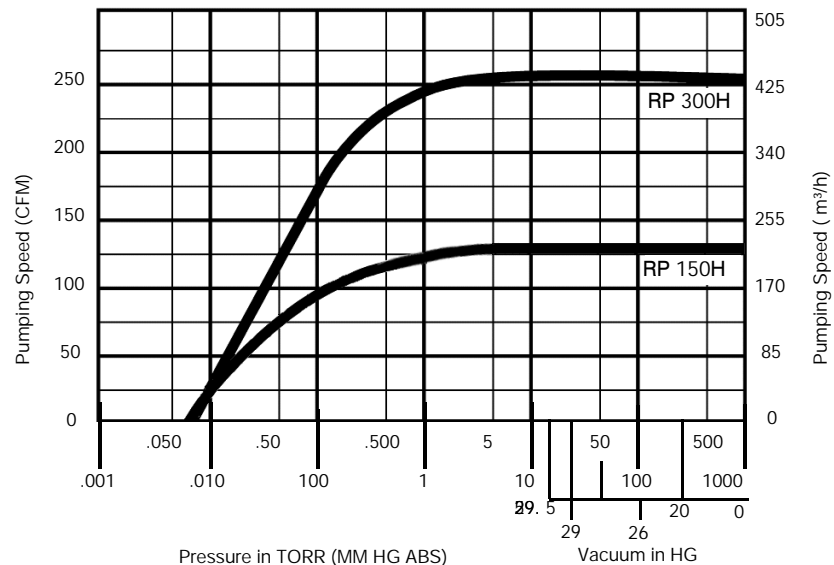
US VACUUM RP series of Rotary Piston vacuum pumps are heavy duty INDUSTRIAL GRADE units capable of producing an ultimate vacuum of 0.010 mmHg (abs). The pump is designed for use in demanding industrial applications where high vacuum, high flow and heavy duty construction are required.

The RP-150H/RP300H are HEAVY DUTY robust vacuum pumps designed for the most demanding pumping applications where higher vacuum is required while also being tasked with handling contaminating process gases and vapors.

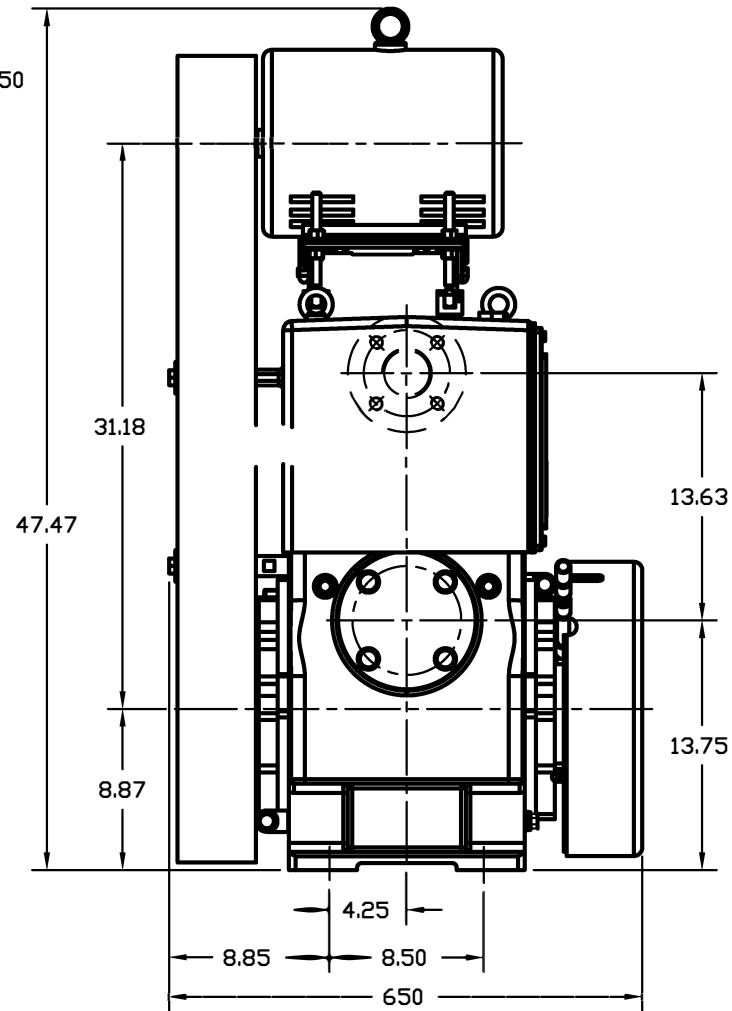
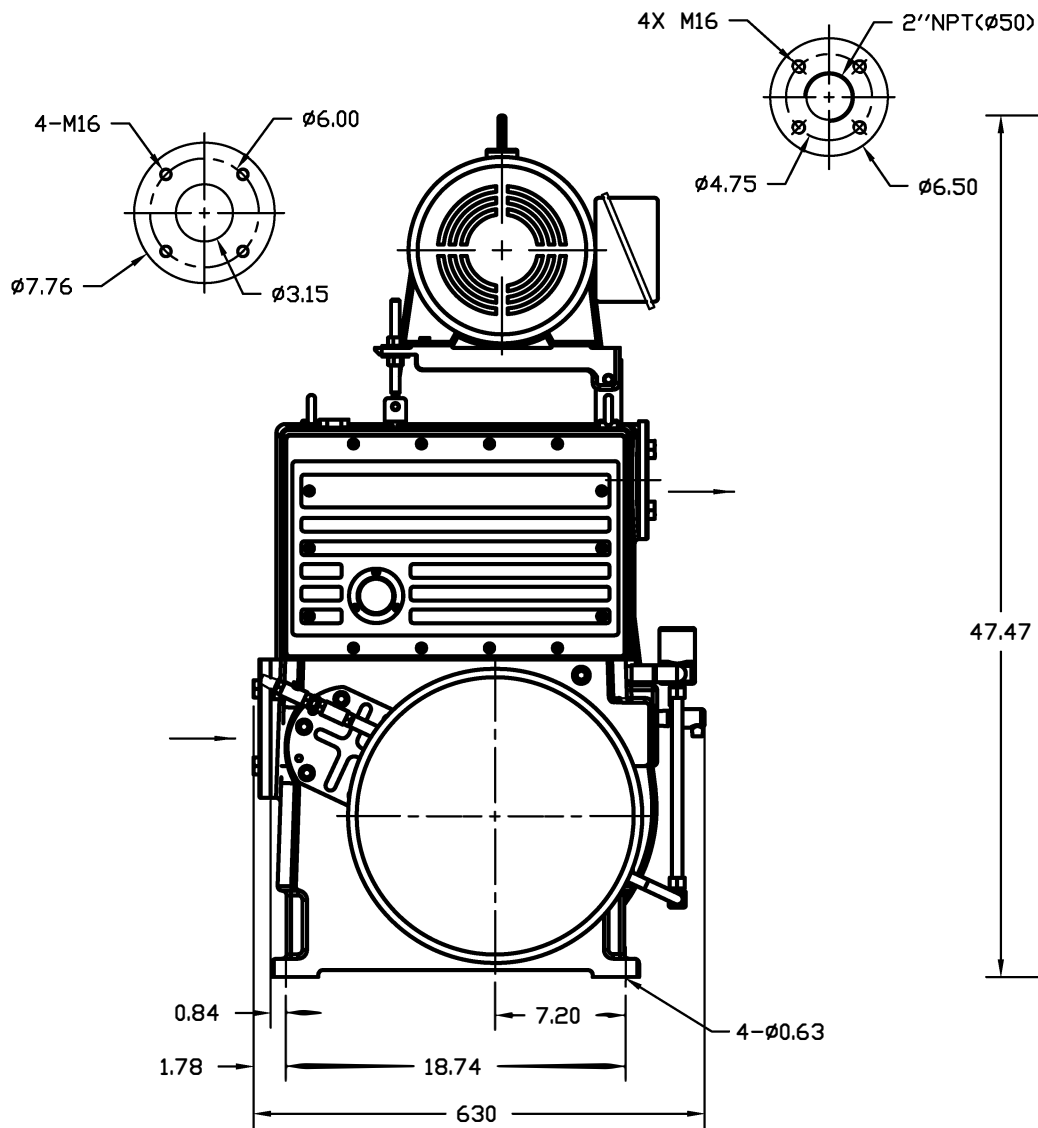
Low operating RPM, single piston design combined with generous oil capacity provides durability and uptime when pumping compromised gas streams. Excellent choice for vacuum heat treating, coating, transformer drying,

FEATURES

- Industrial Duty design
- Low operating RPM
- Large oil capacity
- Ultimate vacuum to 0.010 Torr
- Robust and durable for long life



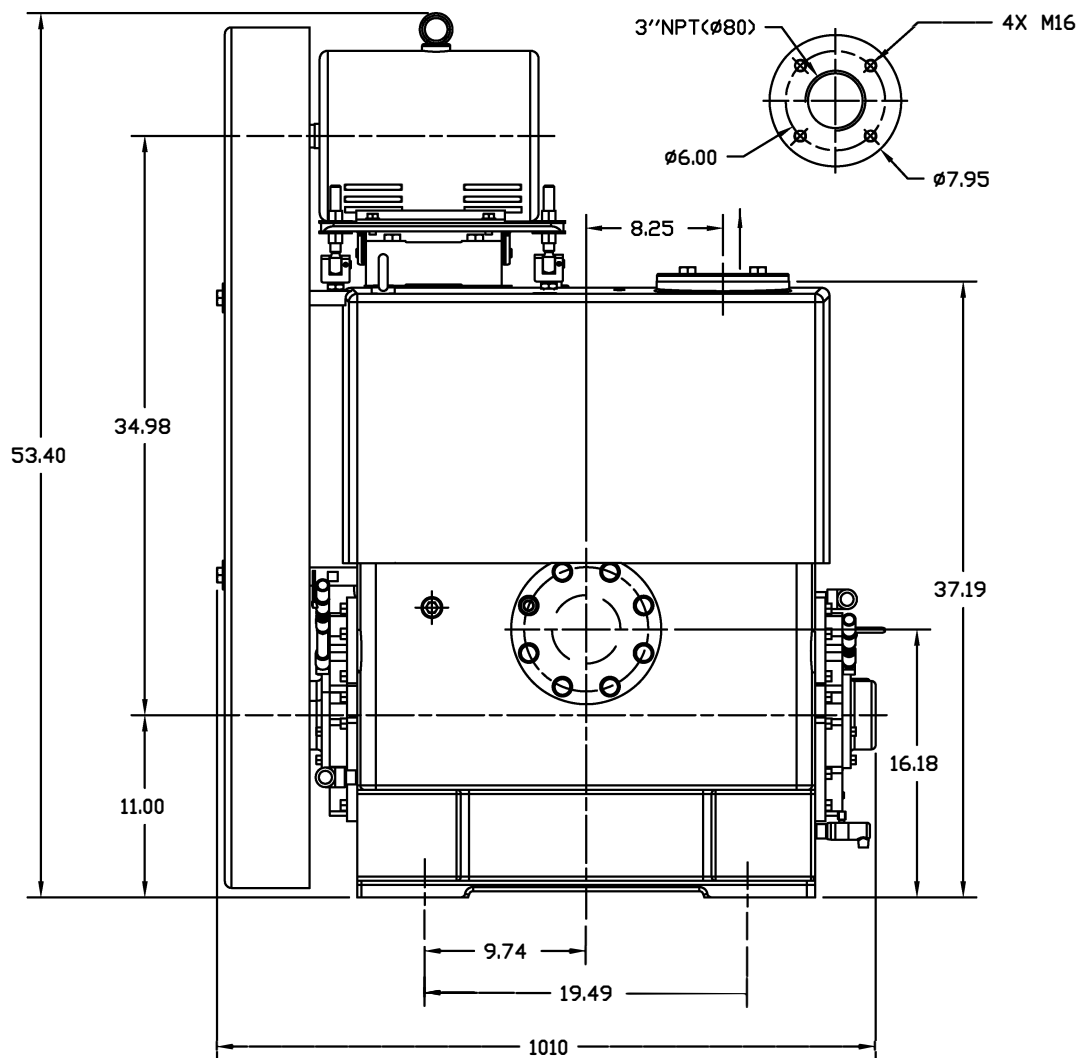
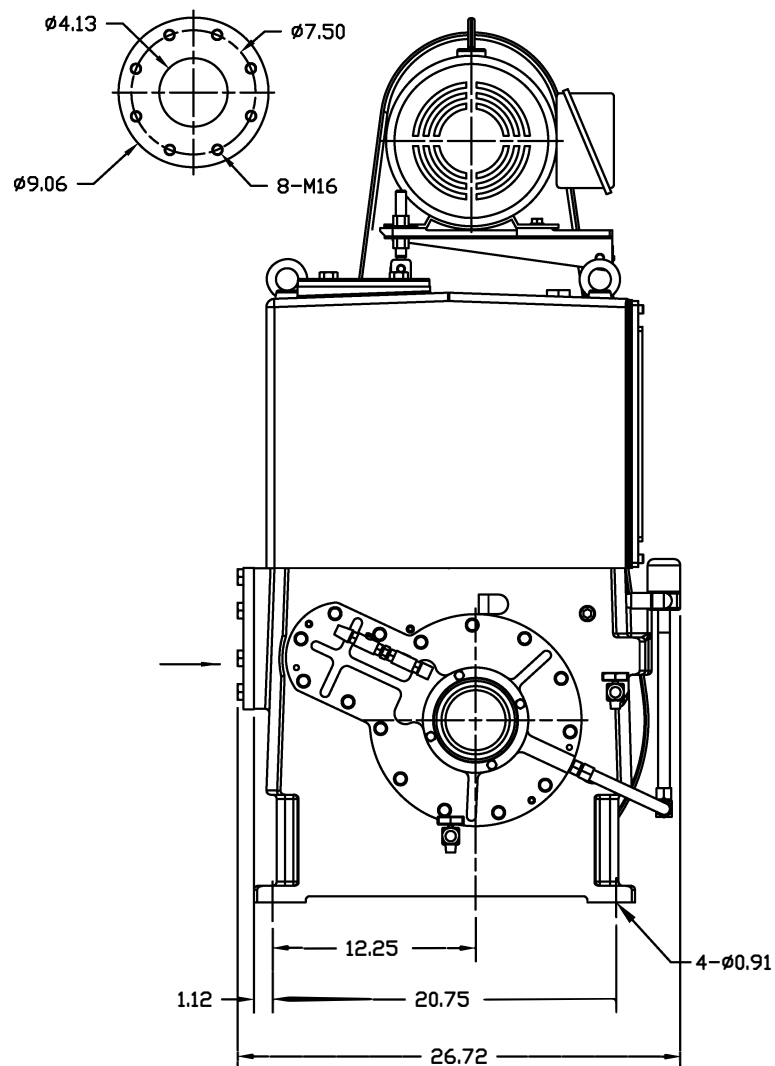
Pump Model		RP-150S	RP-300S
Displacement	CFM	150	300
Ultimate Vacuum	Torr	0.010 (10 Microns)	0.010 (10 Microns)
Motor	Hp	7.5	15
Pump Speed	RPM	500	490
Oil Capacity	Gal	4	12
Inlet connection	Inches	3" ANSI	4" ANSI
Discharge connection	Inches	2" ANSI	3" ANSI
Noise Level	dBa	71	72
Cooling Water	gpm	1	2
Pump Weight	Lbs.	950	1750



0	INITIAL RELEASE				JCM	PD	PD	10 -MAY 18	
REV	DESCRIPTION				DWN	CK	APP	DATE	
DWN	JCM	10 -MAY 18	<small>THIS DRAWING AND ALL INFORMATION SHOWN HEREON ARE THE EXCLUSIVE PROPERTY OF US VACUUM PUMPS, LLC AND ARE LOANED TO A CONFIDENTIAL PARTY ONLY. THE RECIPIENT AGREES NOT TO REPRODUCE OR TRANSMIT IN ANY MANNER OR BY ANY MEANS, IN ANY FORM OR BY ANY MEANS, WITHOUT THE WRITTEN CONSENT OF US VACUUM PUMPS, LLC.</small>						
CK	PD	10-MAY-18							
APP	PD	10 -MAY-18							
SCALE		NTS		CERTIFIED DRAWING US VACUUM PUMPS, LLC P.O. BOX 909 CANTON, TEXAS 75103 PH: 888-416-7466 / FAX: 877-416-7599					
RP-150S ROTARY PISTON VACUUM PUMP									
				DWG. NO. RP150H.M4A1.460				REV 0	

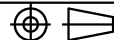
DIMENSIONS ARE IN INCHES [mm]
WEIGHT IN LBS [kg]

FIRST ANGLE
PROJECTION



DIMENSIONS ARE IN INCHES [mm]
WEIGHT IN LBS [kg]

FIRST ANGLE
PROJECTION



0	INITIAL RELEASE			JCM	PD	PD	10-MAY-18
REV	DESCRIPTION			DWN	CK	APP	DATE
DWN	JCM	10-MAY-18	THIS DRAWING AND ALL INFORMATION SHOWN HEREON ARE THE EXCLUSIVE PROPERTY OF DYNAC VACUUM PUMPS, AND ARE SUBMITTED ON A CONFIDENTIAL BASIS ONLY. THE RECIPIENT AGREES NOT TO DISCLOSE THE DISCLOSURE OF THE DRAWING OR THE INFORMATION DRAWING TO ANY OTHER PARTY WITHOUT THE WRITTEN CONSENT OF DYNAC.	CERTIFIED DRAWING			
CK	PD	10-MAY-18		US VACUUM PUMPS, LLC			
APP	PD	10-MAY-18					
SCALE		NTS		P.O. BOX 909 CANTON, TEXAS 75103 PH: 888-416-7466 / FAX: 877-416-7599			
RP-300S ROTARY PISTON VACUUM PUMP				DWG. NO. RP300H.M4A1.460		REV 0	